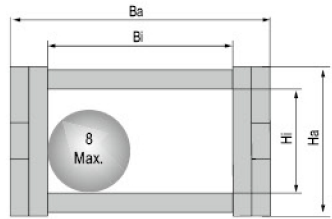


SERIES

JF10.15Q

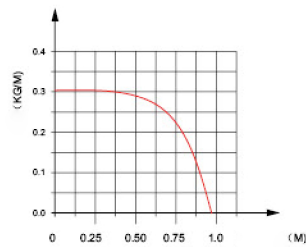
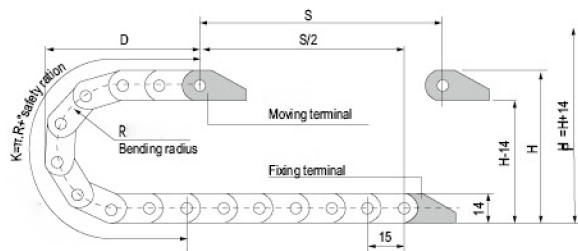


Miniature series



- © The cable chain is low noise and smooth operation. Its tested service life is up to 20 million times.
- © The cable chain is suitable for a diameter of 8mm or less of cable.

Basic technical data

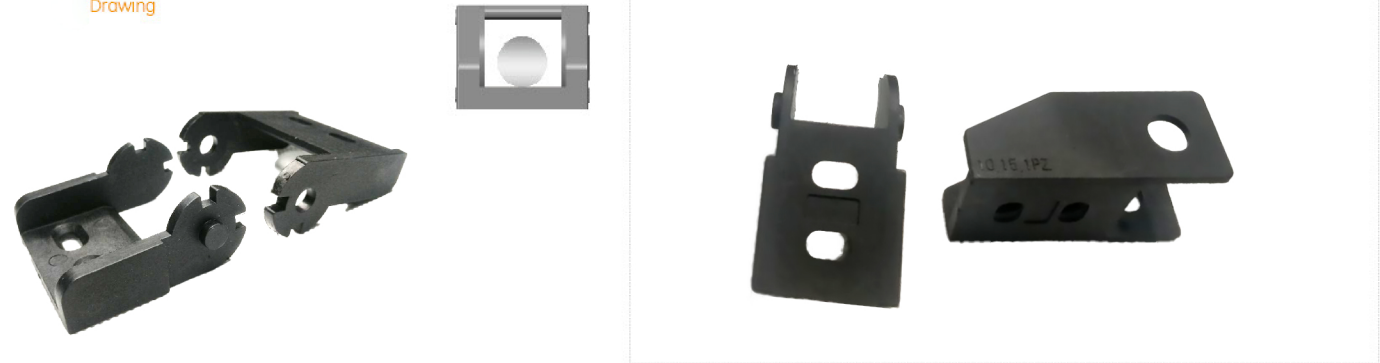


Pitch=15mm, link per meter=66, length of chain= $S/2+K$, S =stroke, $K=\pi \cdot R$ "safety rations"

	R	28	38
H	50	70	90
D	40	50	60
K	90	120	150

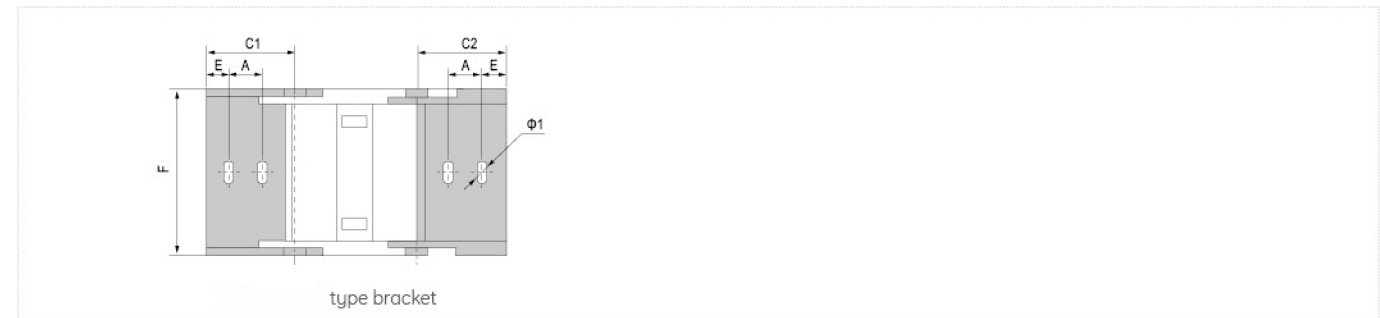
Actual mounting height: $H_p=H+13.5\text{mm}$ (load 0.2kg/m)

Drawing



Series No.	Hi	Bi	Ha	Ba	Styles	Bending radius R	Bracket type and parameters						
							(mm)hole distance						No.
							A	B	C	D	E	F	
JF10Q	10	10	14	17.5	Q	18	8		22	4	17	JF10Q	
JF15Q	10	15	15.5	23	Q	18	10		C1=31 C2=27	8	23	JF15Q	

Fix bracket type and parameters



Order Sample

(Sample: inner height 10mm, inner width 10mm, radius 18mm, length 33 links/0.5 meter)

Note: Various sizes can be customized according to customer requirements.



MADE IN TURKEY