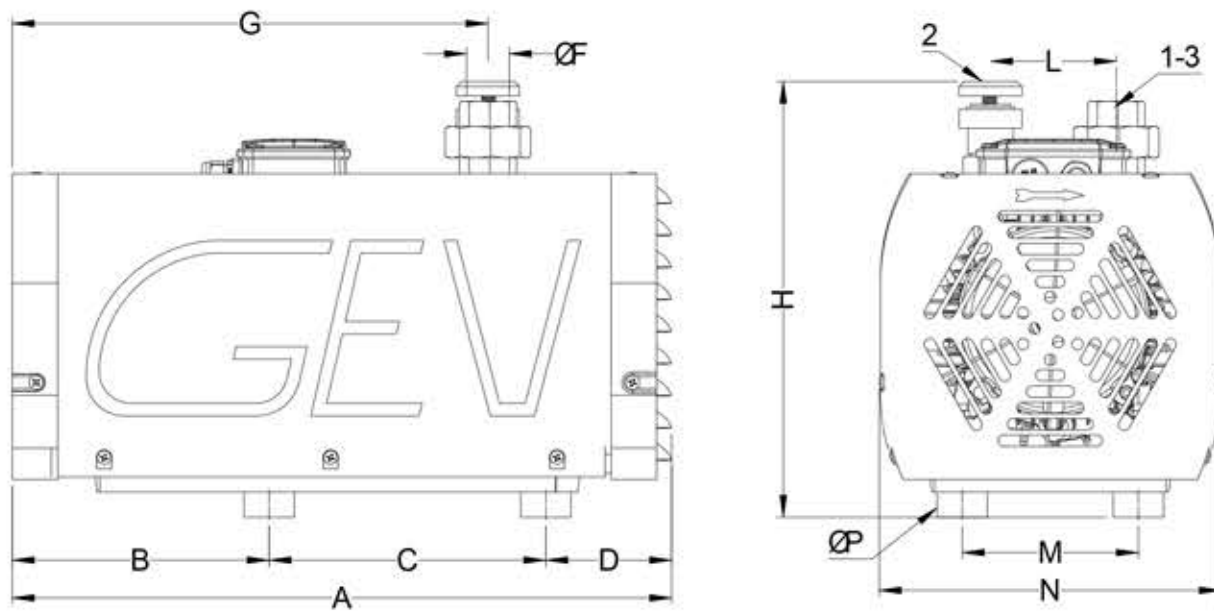


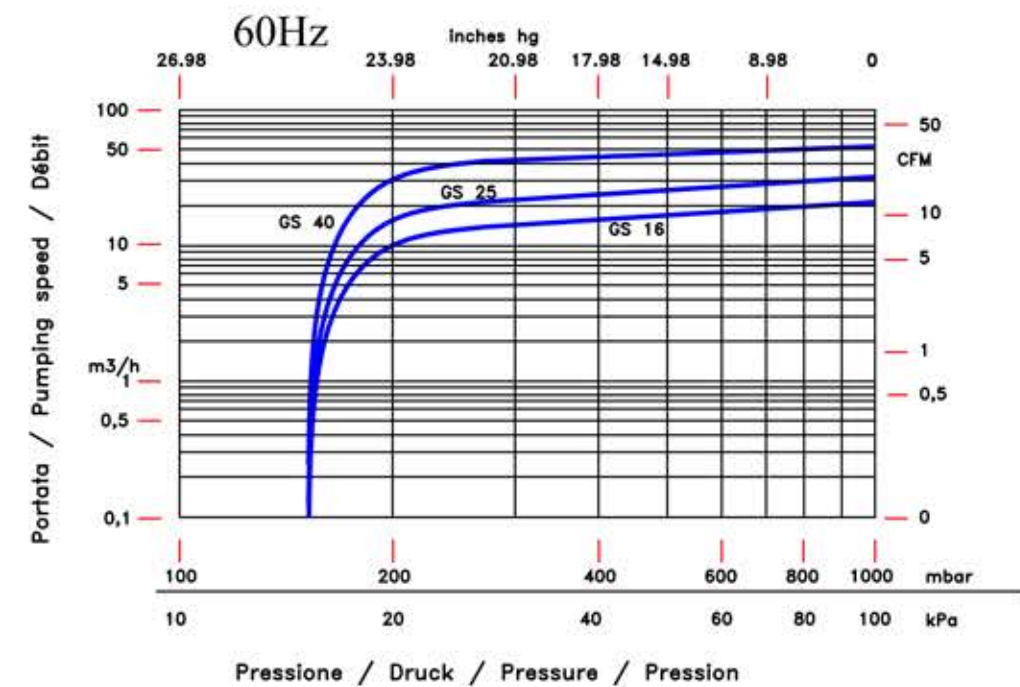
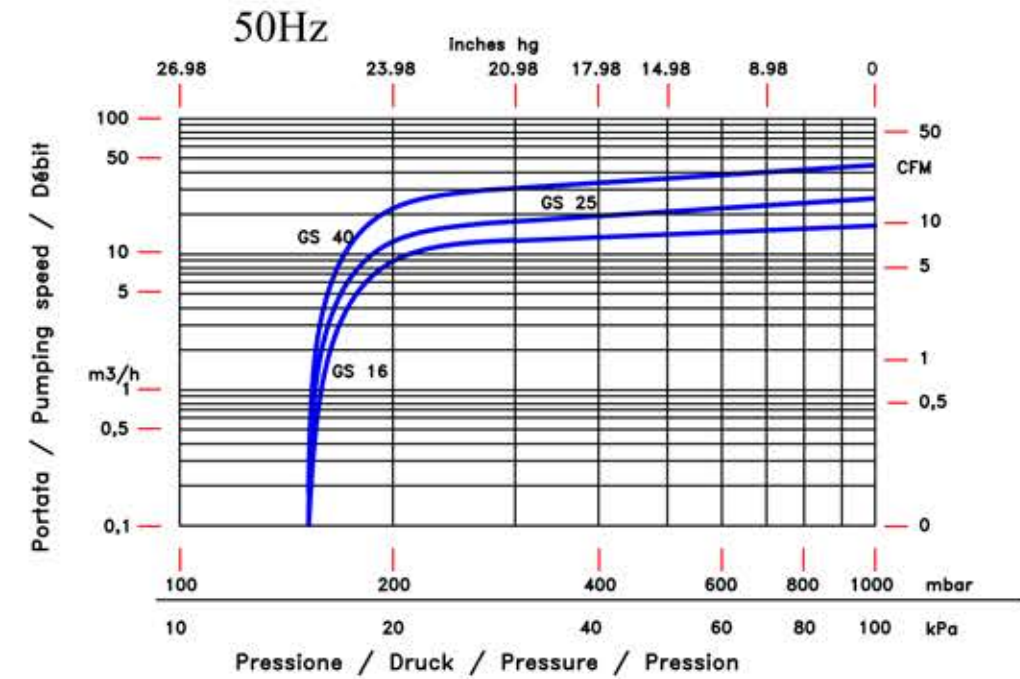
Pompa tipo GS 16 - 25 - 40  
Pump type GS 16 - 25 - 40



- |                      |                |
|----------------------|----------------|
| 1 Aspirazione        | 1 Suction      |
| 2 Mandata            | 2 Discharge    |
| 3 Filtro aspirazione | 3 Inlet filter |

GS	Dimensioni (mm) Dimension (mm)										
	A	B	C	D	F	G	H	L	M	N	P
16	524	211	220	93	3/4" G	385	335	100	140	270	M8
25	524	211	220	93	3/4" G	385	335	100	140	270	M8
40	524	211	220	93	3/4" G	385	315	100	140	270	M8

Disponibile anche nella versione compressore  
Pump is available also as compressor version



			Tipo di pompa/Frequenza Pump type/Frequency					
			GS 16 50Hz	GS 16 60Hz	GS 25 50Hz	GS 25 60Hz	GS 40 50Hz	GS 40 60Hz
Portata nominale	Displacement	m³/h	17,1	20,5	26,1	31,3	45	54
Vuoto finale	Ultimate vacuum	mbar	150	150	150	150	150	150
Rumorosità media	Noise level	db (A)	63	65	65	67	70	72
Tensione standard	Standard voltage	V	230/400	460	230/400	460	230/400	460
Potenza motore	Motor power	kW	1,1	1,1	1,1	1,5	1,5	1,5
Velocità di rotazione	R.P.M.	g/1'	1450	1750	1450	1750	1450	1750
Peso	Weight	kg	30	30	35	35	50	50